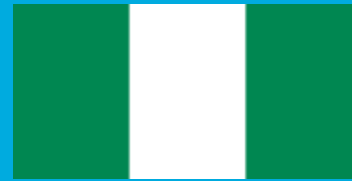


# West African Fisheries Profiles



## Nigeria

**Total Fish Production:** 579,537 MT (2005)  
**Total Seafood Export Value:** \$56,800,000 (2005)  
**Percentage of GDP:** 0.66%  
**Total Number of Jobs:** 800,000+; 700,000+ (direct)  
**Percentage of Jobs:** Not available

Source: FAO, Fishstat

### Top 10 Species Exported (Value)

1. Shrimp and prawns, frozen (\$52,100,000)
2. Crab, frozen (\$1,100,000)
3. Fish filet, frozen (\$900,000)
4. Cuttlefish (\$600,000)
5. Marine fish filet, frozen (\$200,000)
6. Dried fish (\$100,000)
7. Molluscs (\$100,000)
8. Crab meat (\$60,000)
9. Shrimp and prawns, not frozen (\$40,000)
10. Crustaceans, frozen (\$30,000)

Source: Fishstat/2005

### Top Exports to the U.S. (Value)

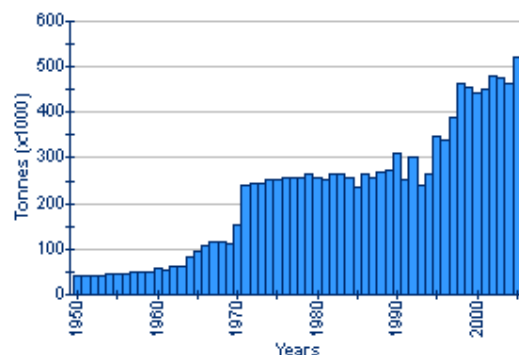
**2005:** Fish NSPF smoked (\$8,475)  
 Lobster rock live/fresh/dried/salted/brine (\$5,560)  
 Grand total: \$14,035

**2006:** Crustaceans NSPF live/fresh/dried/salted/brine (\$4,321)  
 Lobster rock live/fresh/dried/salted/brine (\$5,250)  
 Shrimp peeled fresh/dried/salted/brine (\$3,100)  
 Grand total: \$12,671

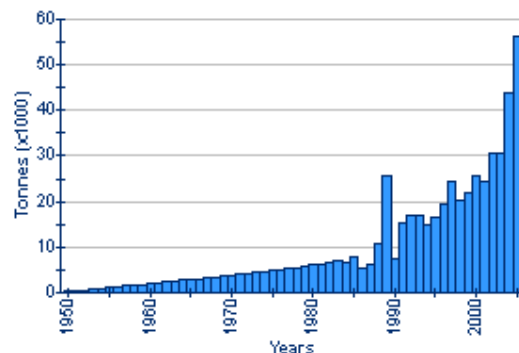
**2007:** Crustaceans NSPF live/fresh/dried/salted/brine (\$9,947)  
 Fish meal for human consumption not > 6.8 kg (\$6,307)  
 Lobster rock live/fresh/dried/salted/brine (\$6,900)  
 Shrimp shell-on fresh/dried/salted/brine (\$2,040)  
 Shrimp shell-on frozen 21/25 (\$131,040)  
 Shrimp shell-on frozen 26/30 (\$541,728)  
 Shrimp shell-on frozen 31/40 (\$62,208)  
 Shrimp shell-on frozen <15 (\$295,940)  
 Coral, shells, cuttlebone crude/simplely prepared (\$13,429)  
 Waxes NSPF, may include spermaceti (\$10,473)  
 Grand total: (\$1,080,012) Source: NOAA Fisheries

### Wild Capture Production (FAO)

Source: Fishstat



### Aquaculture Production (FAO)



**WASSDA**  
 WEST AFRICA  
 SUSTAINABLE SEAFOOD  
 DEVELOPMENT  
 ALLIANCE

**Contact:**  
 WASSDA  
 c/o West Africa Trade Hub/Dakar  
 Residence Seguele – Route de Ngor/Casino  
 B.P. 45095 Dakar-Fann  
 Dakar, Senegal  
 Phone: +221 33 869 14 11  
 Fax: +221 33 820 26 56

---

## Industry Profile

Nigeria's artisanal sector is the largest in the region, with thousands of vessels along the coast, in estuarine areas, and inland that use nets, hooks, traps, and seines.

Several hundred small- to medium-sized trawlers, operated principally by smaller firms, fish in coastal waters, mainly in the east. The shallow continental shelf and lack of upwellings reduce the productivity of demersal fishing.

In general, the Nigerian fishery is overcapitalized (200 to 300 additional vessels are licensed annually), and existing vessels are slow to adapt to new fishing practices and gear innovations, thereby reducing fleet efficiency.

*Source: FAO*

## State of Processing and Value-Added Industry

Most fish catch is frozen for distribution to urban centers throughout the country. Some fish (mainly artisanal pelagics) is smoked for distribution to villages with limited cold-storage infrastructure. Smoking occurs in small and home-based enterprises along the coast and around Lake Chad, and is done principally by women.

Nigeria has a high rate of domestic seafood consumption—almost all fish production is consumed in country. Shrimp is the only large export; about half of total production is exported.

*Source: FAO*

---

## Challenges and Prospects

Most efforts to increase production are focused on meeting domestic demand.

There is currently little use of processing by-products, such as fish meals and oils, which are generally discarded.

Despite the existence of substantial tuna stocks, Nigeria has not participated much in the tuna fishery. Only in recent years has Nigeria landed small amounts of tuna for domestic consumption.

There is potential for growth in the aquaculture industry, which the government has supported since the 1960s. Currently, most operations are small and private, but some larger companies are attempting to develop economies of scale.

*Source: FAO*

---

## Sustainability

The artisanal fishery sector is vital to the local economies of the coastal and estuarine regions.

Pollution is a major concern in estuarine and brackish areas. It now has a serious impact on biological productivity. Erosion, siltation, and illegal fishing also harm productivity in these areas. Lakes are slightly better off—productivity is enhanced by stocking programs and environmental conditions are more favorable.

In coastal areas, sustainable management is possible in the artisanal sector, but industrial trawlers consistently violate restrictions on entry into near-shore waters, confounding management attempts to create a sustainably managed artisanal fishery.

*Source: FAO*

